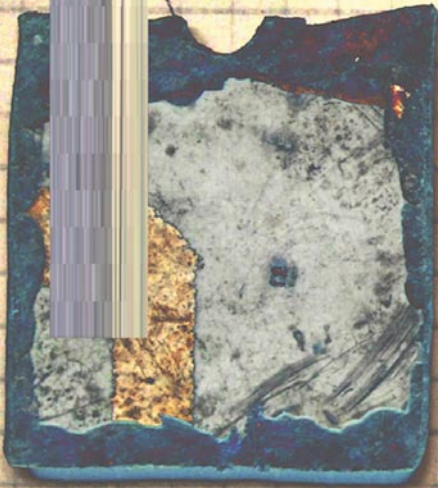
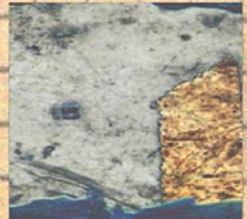


APARTMENT HOUSE



APARTMENT
HOUSE

2 ← → 0
YEARS

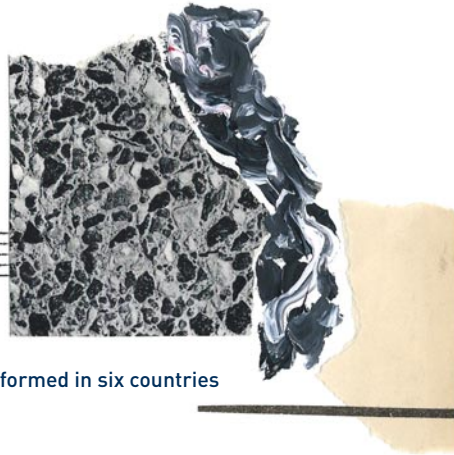


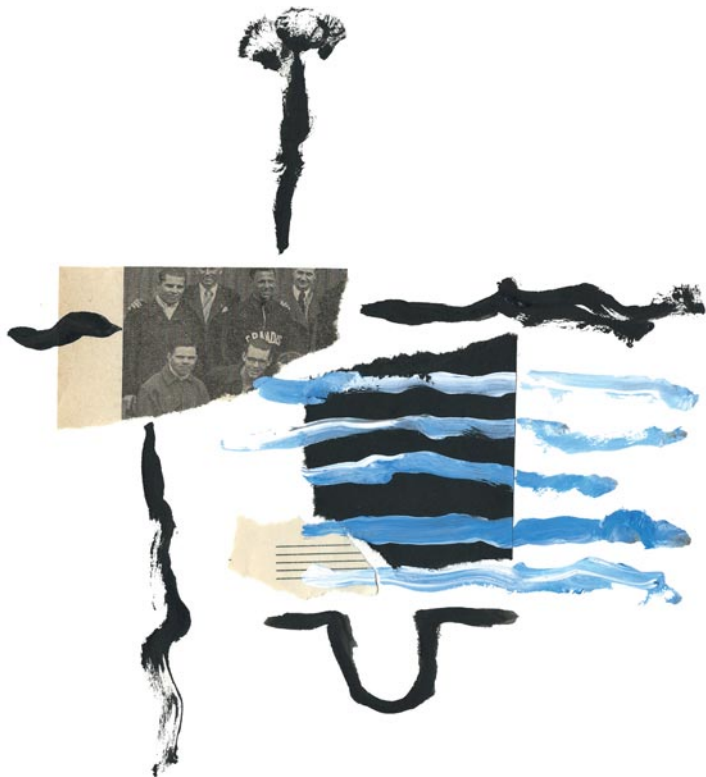
6

20 Years of Apartment House

For the past 20 years Apartment House has been captivating audiences with its performances of experimental and contemporary music. The group has performed all over Europe, from Oslo to Rome and from Barcelona to Vilnius, and is a firm feature on the British concert scene, with regular performances at Café Oto and a residency at the Wigmore Hall. Apartment House is the most frequently featured UK ensemble in the history of the Huddersfield Contemporary Music Festival and its John Cage portrait concert at the Queen Elizabeth Hall, Southbank Centre, won the group a Royal Philharmonic Society Award for outstanding contribution to Chamber Music and Song.

- Over 100 New Works commissioned
- Over 100 UK Premieres
- Royal Philharmonic Society Award for Chamber Music and Song
- Radical New Opera, Jenny Walshe *XXX_LIVE_NUDE_GIRLS!!!* performed in six countries
- Worldwide Concerts (Russia, USA, Australia, Europe)
- Numerous BBC Recordings and Broadcasts, with further taking place during the anniversary year
- Sell Out John Cage Concert at London's Queen Elizabeth Hall
- Sound and Music *Embedded* Residency Partner
- 'Compellingly beautiful' CDs (The Guardian)
- Residency at Melbourne Arts Centre with Saskia Moore *Dead Symphony*





Welcome

Apartment House was created 20 years ago in order to perform works that I felt were important in the field of experimental and contemporary music. This enthusiasm led to the group commissioning over 100 new works. Early concerts featured music by composers from Europe, such as Helmut Lachenmann, Mathias Spahlinger and Dieter Schnebel, who were virtually unplayed in the UK. This was complimented with US composers such as John Cage, Peter Garland and Christian Wolff. As the group developed, young emerging composers were embraced and commissioned such as Laurence Crane, Jennifer Walshe, James Saunders, Joanna Bailie, Claudia Molitor, Bryn Harrison and Tim Parkinson.

Apartment House has always led an exploratory path, retracing music from the past avant-garde, combined with a keen sense of researching and unearthing the new. It continues to commission radical work and explore the past, questioning and celebrating the wonderful phenomena of experimental and contemporary music of our time.

Anton Lukoszevics
Artistic Director



20th Anniversary Commissions

Darius Petulis



Egidija Medekšaite, Lithuania
Pratiksha for string quartet, piano, reed organ
and percussion
(Wigmore Hall commission)

Dave Maric



Leo Chadburn, UK
Freezywater for string quartet, piano, reed organ
and percussion
(Wigmore Hall commission)

Rosemary Devlin



Martin Arnold, Canada
Stain Ballad for string quartet, piano, reed organ
and percussion

Bronwen Sharp



Jobina Tinnemans, Netherlands/UK
New work for vocalist, strings, keyboard
and electronics
(Commissioned through Sound and Music's
Embedded scheme)

Andy Sawyer

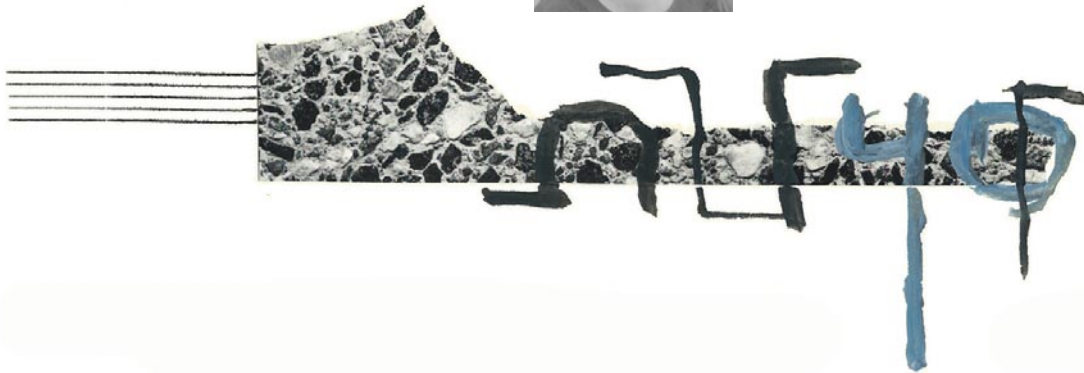


Vitalija Glovackyte, Lithuania/UK
New work for clarinet, cello, double bass, accordion,
recycled instruments and electronics
(Commissioned through Sound and Music's
Embedded scheme)

Anton Lukoszevics



Cassandra Miller, Canada
New work for mezzo soprano, string quartet,
french horn and percussion
(Canada Council commission)



20th Anniversary Celebrations UK Highlights

9 July 2015, Cafe Oto, London

20 Years of Apartment House

www.cafeoto.co.uk

17 September 2015, Whitechapel Gallery, London

Fluxus Concert

www.whitechapelgallery.org

25 September 2015, Serpentine Gallery, London

Christian Wolff portrait in new pavilion by selgascano

www.serpentinegalleries.org.uk

Concerts as part of

Hayward Touring Exhibition *Listening*

Yorkshire Sculpture Park

Saskia Moore *Dead Symphony* as part of Bill Viola exhibition

27 February 2016, Wigmore Hall, London

New Commissions

www.wigmore-hall.org.uk

The Sage, Gateshead

Saskia Moore *Dead Symphony*

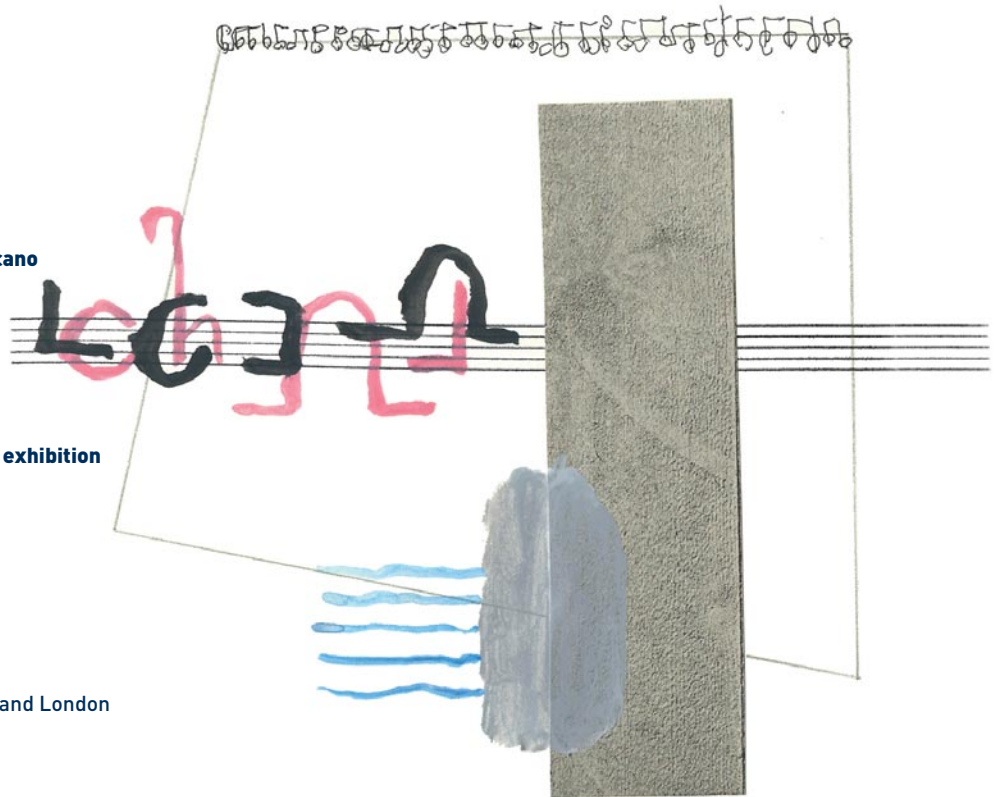
UK tour with concerts in Manchester, Birmingham and London

Featuring new work by Vitalija Glovackyte

Concert series at Café Oto

Including premiere of new work by Jobina Tinnemans

For details on concerts and events throughout the anniversary year visit the group's website www.apartmenthouse.co.uk



Apartment House Recordings



George Maciunas Musical Scoring Systems
(LMIC, 2015)



Laurence Crane Chamber Works
(Another Timbre, 2014)
“compellingly beautiful” The Guardian
In Top 50 Albums of the Year, 2014, The Wire



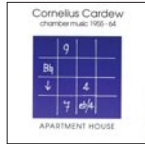
Jennifer Walshe XXX_Live_Nude_Girls
(DVD, Mere Records, 2009)



Peter Garland String Quartets
(Cold Blue Music, 2009)
“I can’t imagine any group presenting this repertoire more sympathetically or with greater technical prowess.” International Record Review



Zbigniew Karkowski / Atsuko Nojiri Continuity
(Asphodel, 2007)



Cornelius Cardew Chamber Music 1955-64
(Matchless Recordings, 2001)

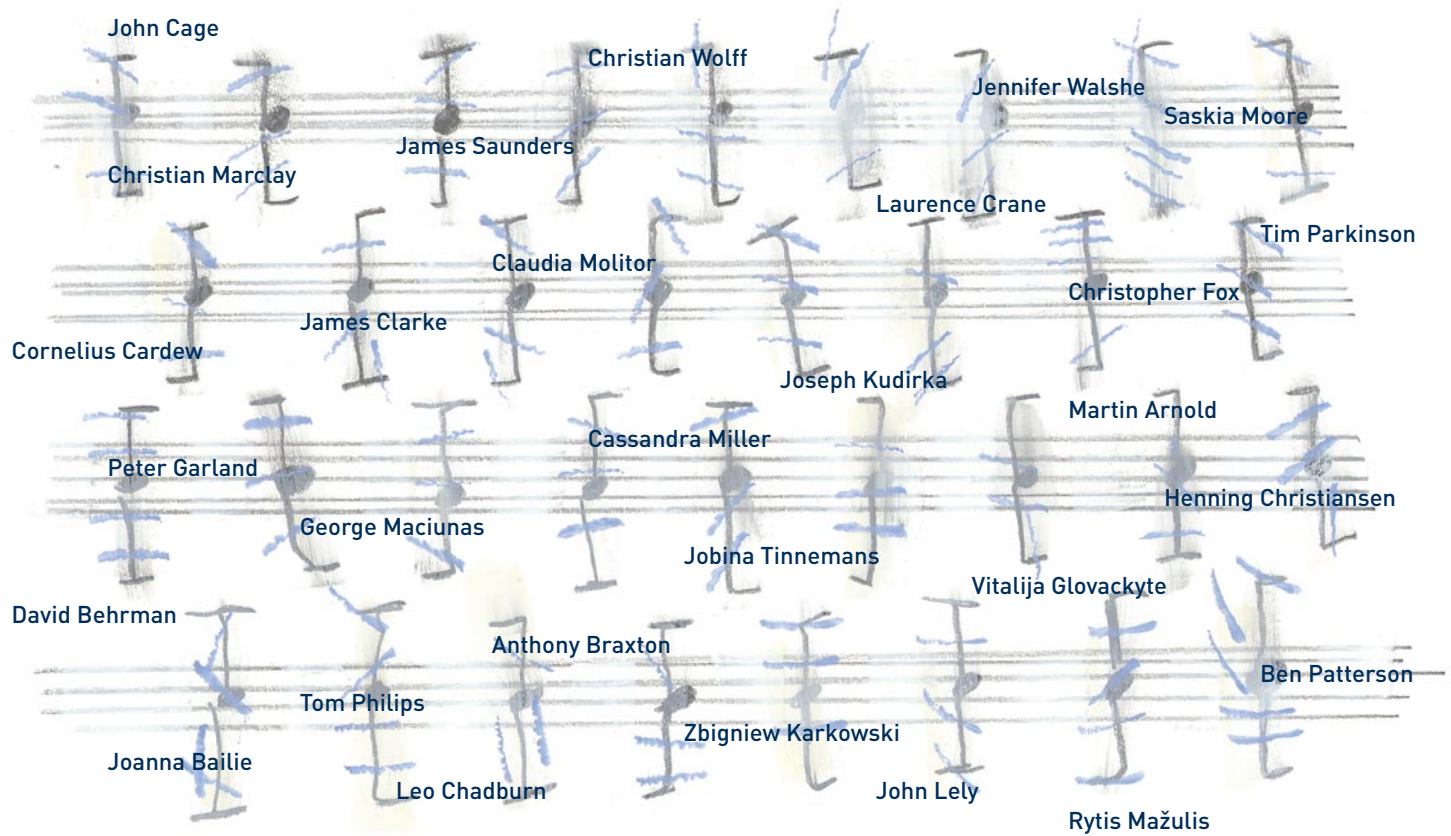


Wittener Tage für Neue Kammermusik
Live documentation CD
(WDR, 2002)

Future releases: **James Saunders** Assigned #15 (Another Timbre, June 2015)
Joseph Kudirka Chamber Works (Another Timbre, Autumn 2015)
Christian Wolff Exercises (SubRosa, 2016)
John Cage and Michael Parsons (2016-17)



20 Years of Work with Composers



Their performances are always revelatory, and the concert of John Cage's music at the Queen Elizabeth Hall was an epiphany, confirming the status of Apartment House as one of the most innovative and exciting chamber ensembles in Europe.

Winner's Citation, Royal Philharmonic Society Award for Chamber Music and Song

For bookings or other enquiries please contact Julia Haferkorn, j.haferkorn@thirdear.co.uk

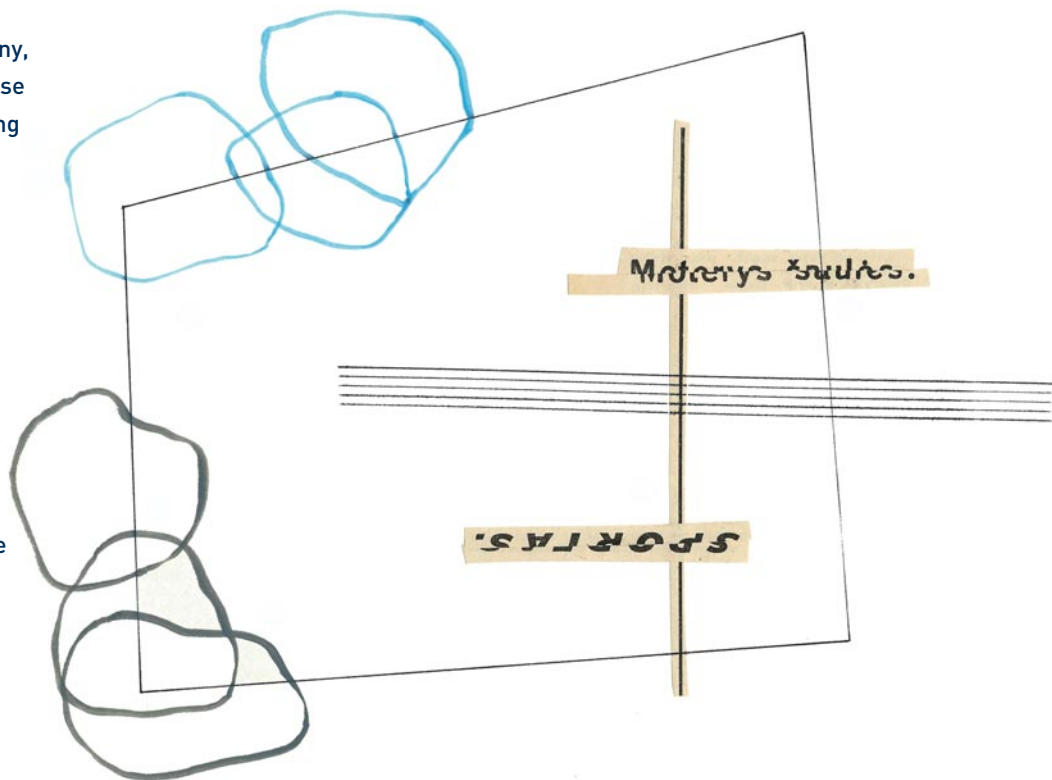
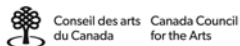
www.apartmenthouse.co.uk
www.soundcloud.com/apartment-house

With heartfelt thanks to Arts Council England for their support



Supported using public funding by

Our gratitude also goes to Wigmore Hall, Sound and Music / Esmée Fairbairn Foundation, and Canada Council for enabling us to commission new works



Untitled Images by Anton Lukoszevics